

## Fire Detection System Requirements

### Building A – Requirement

Seno	Building A – Marketing Area	STC Required Quantity	Suppliers Response (Agreed/No)
01	Smoke Detectors	18	
02	Sounders	1	
03	Manual Call Points (GM/Cashier/Exit)	3	
Seno	<b>Building A – Lobby and Board Room area</b>	Quantity	
01	Smoke Detectors	12	
02	Heat Detectors	1	
03	Sounders (Chairman office 1, Board Room end 1 )	2	
04	Manual Call Points (Chairman off/Board Room/Corridor)	3	
Seno	<b>Building A – Ground Floor</b>	Quantity	
01	Smoke Detectors	8	
02	Sounders ( Showroom + DFS)	2	
03	Manual Call Points	3	

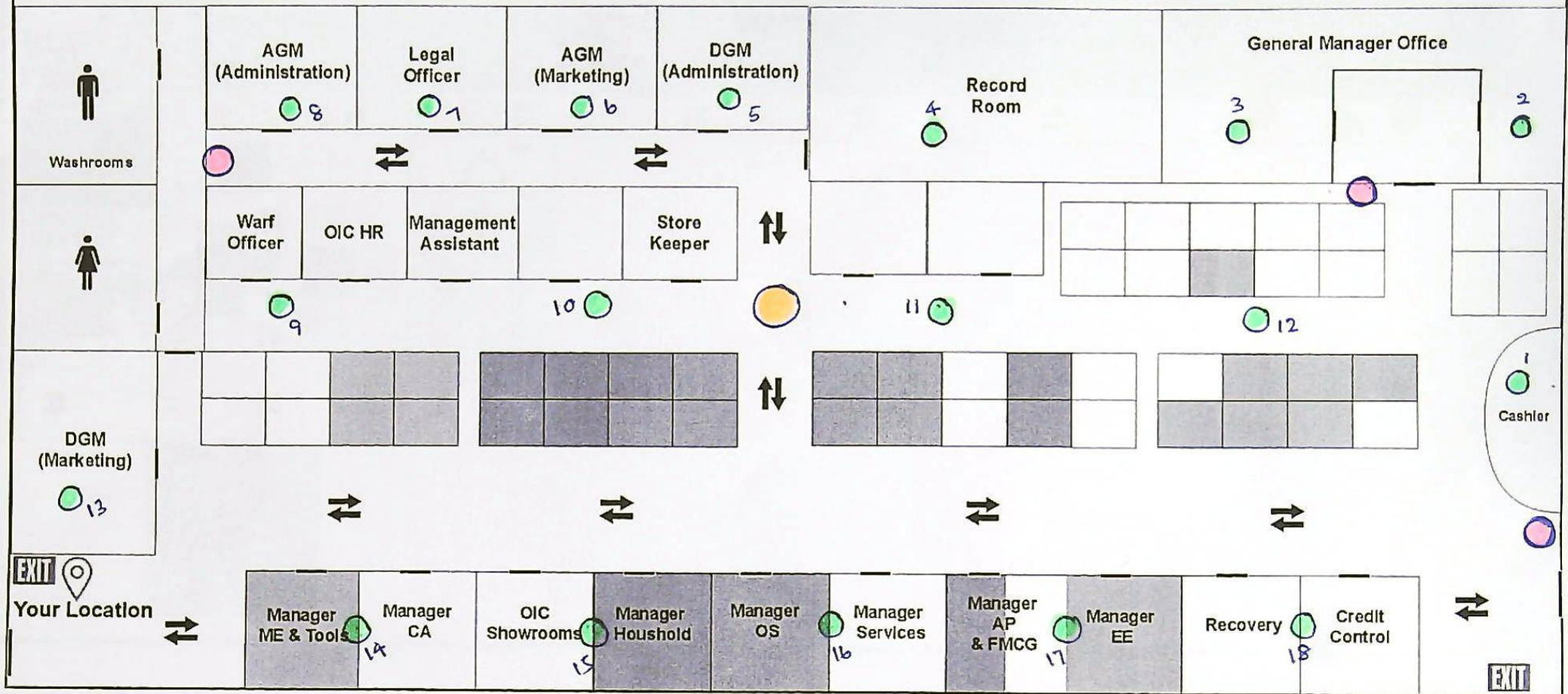
### Building B – Requirement

Seno	Building B – Ground Floor	Quantity	Response (Agreed/No)
01	Smoke Detectors	12	
02	Sounders ( Stores 1 , HR dept 1, Stationery Stores 1)	3	
03	Manual Call Points ( Store 1, HR 1 , Stationery 1 , welfare1)	4	
Seno	<b>Building B – First Floor (Finance + Stores)</b>	Quantity	
01	Smoke Detectors	12	
02	Sounders ( Finance 1 + Stores 1)	2	
03	Manual Call Points	3	
Seno	<b>Building B – 2<sup>nd</sup> Floor</b>	Quantity	
01	Smoke Detectors	10	
02	Sounders (Inside 1 + Outside stationary stores 1)	2	
03	Manual Call Points	1	

### Total Requirement for Both Buildings

Seno	Building B – 2 <sup>nd</sup> Floor	Quantity	Response (Agreed/No)
01	Smoke Detectors	72	
02	Heat Detectors	1	
03	Sounders	12	
04	Manual Call Points	17	
05	Operating Panel ( Automatic Detection and Alarm) with Drawings and Alarm Indicators Should support expansion (Smoke – 80 / Heat 3/ Sounders 15/ Manual Call 25)	1	

# Building A (Part 1) Marketing Division Plan

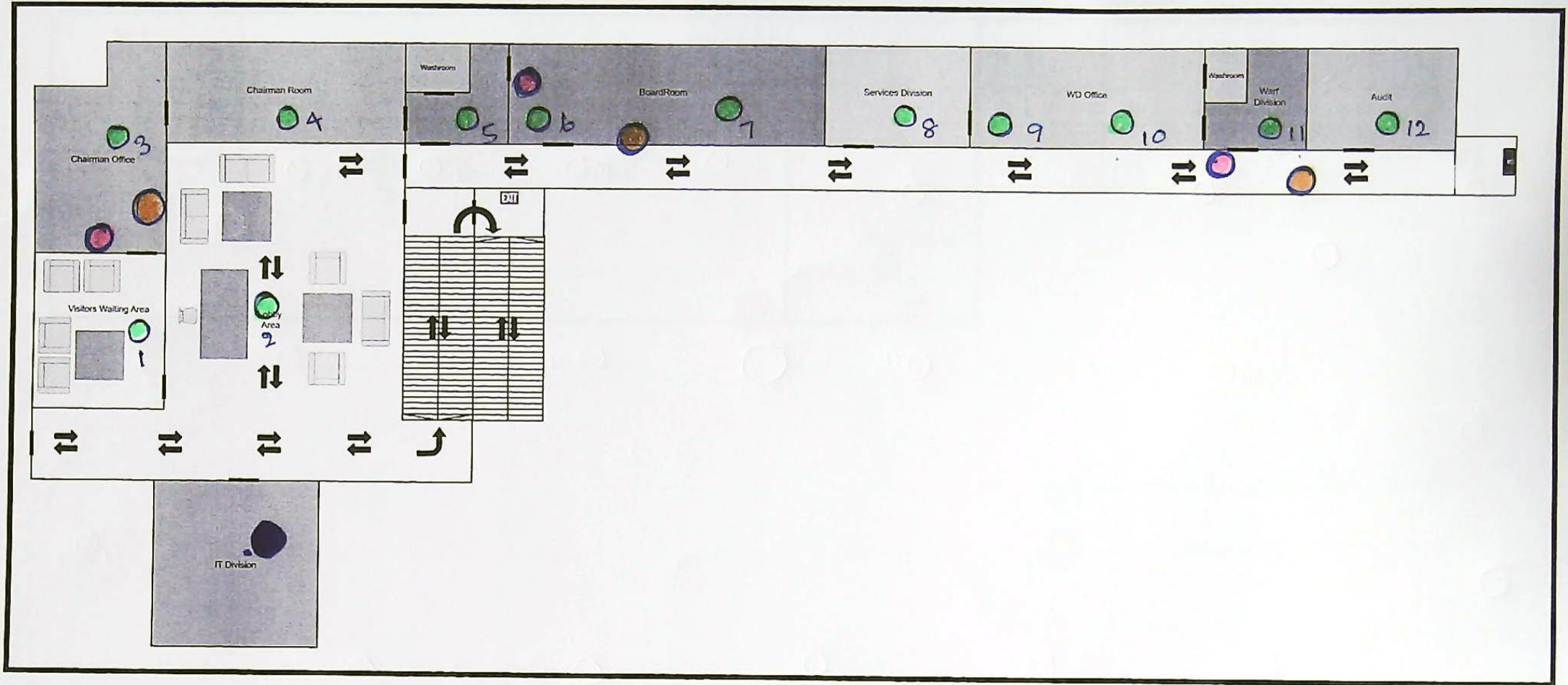


○ - manual call points 3 nos

○ - smoke detectors 18 Nos

○ - sounder with light

# Building A (Part 2) Lobby Plan



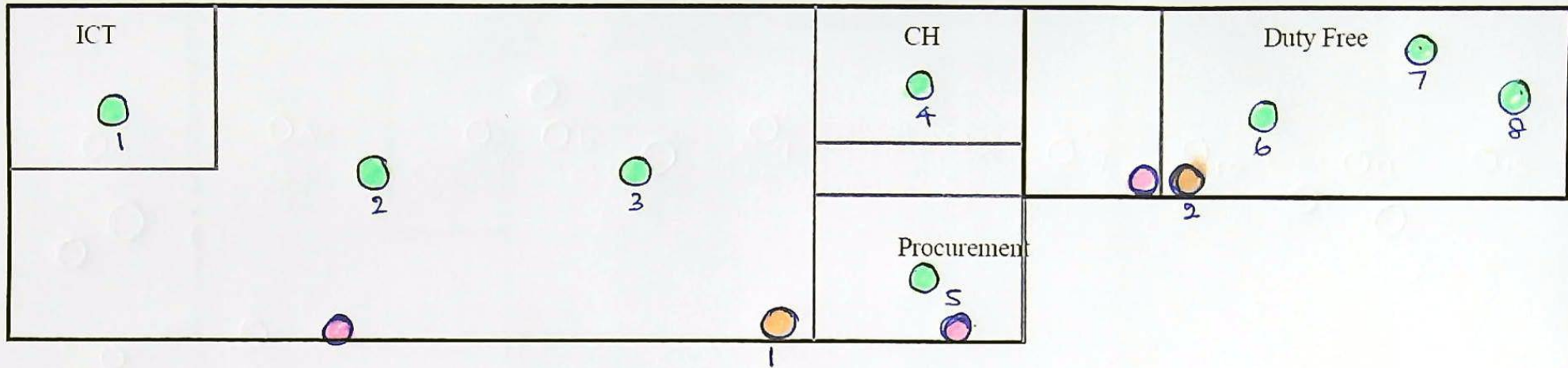
○ - manual call points. 3 nos

● - Smoke detectors 12 nos

● - Heat detector

● - Sounders with light 3 nos

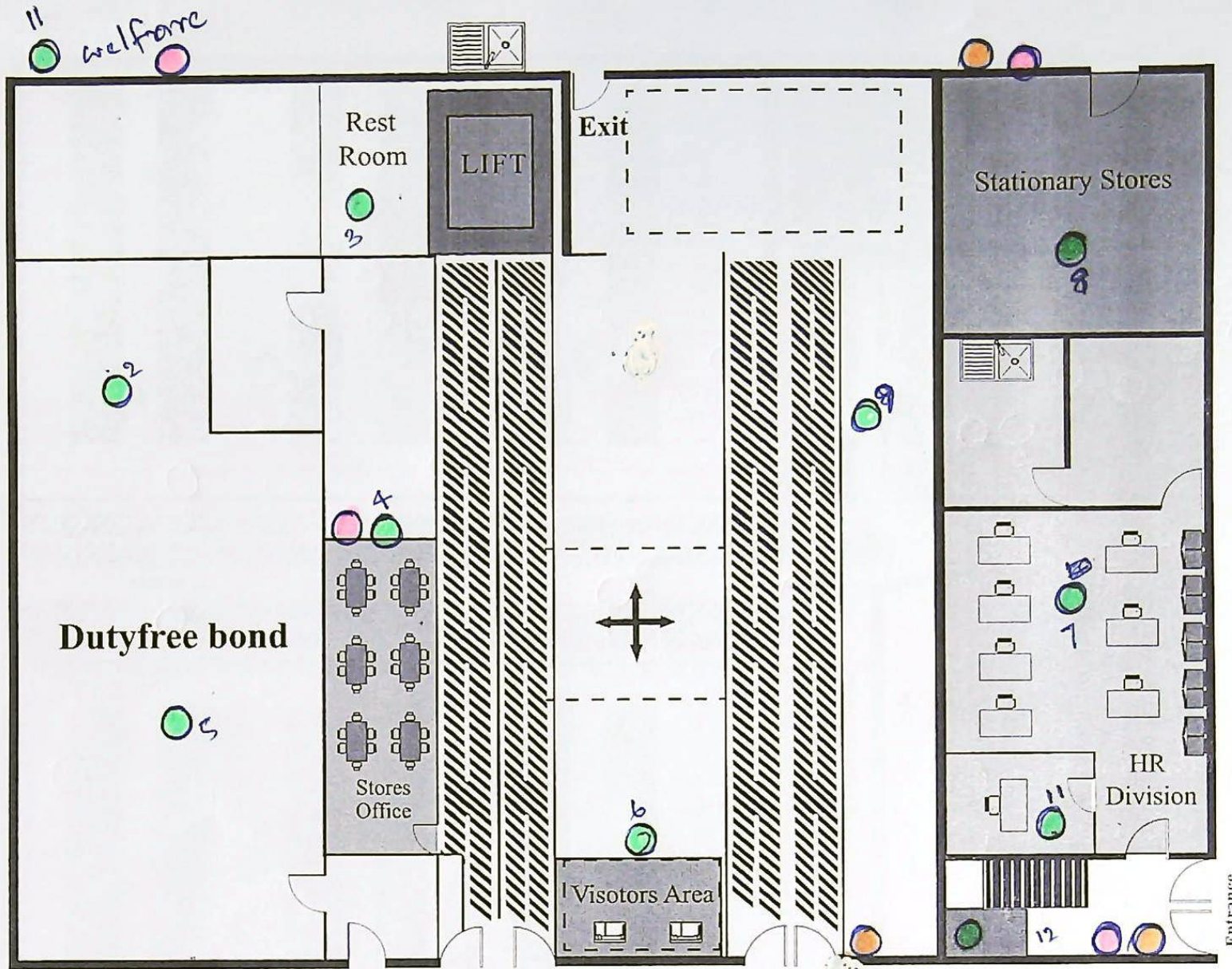
Building A (Ground Floor) – Size (Length 87Meters x Width 7.5meters)



- — smoke detectors 8 nos
- — Sounders with light 2 nos
- — manual call points 3 nos

# Building B Stores Ground Plan

plan ④



formalin chemical Store Area

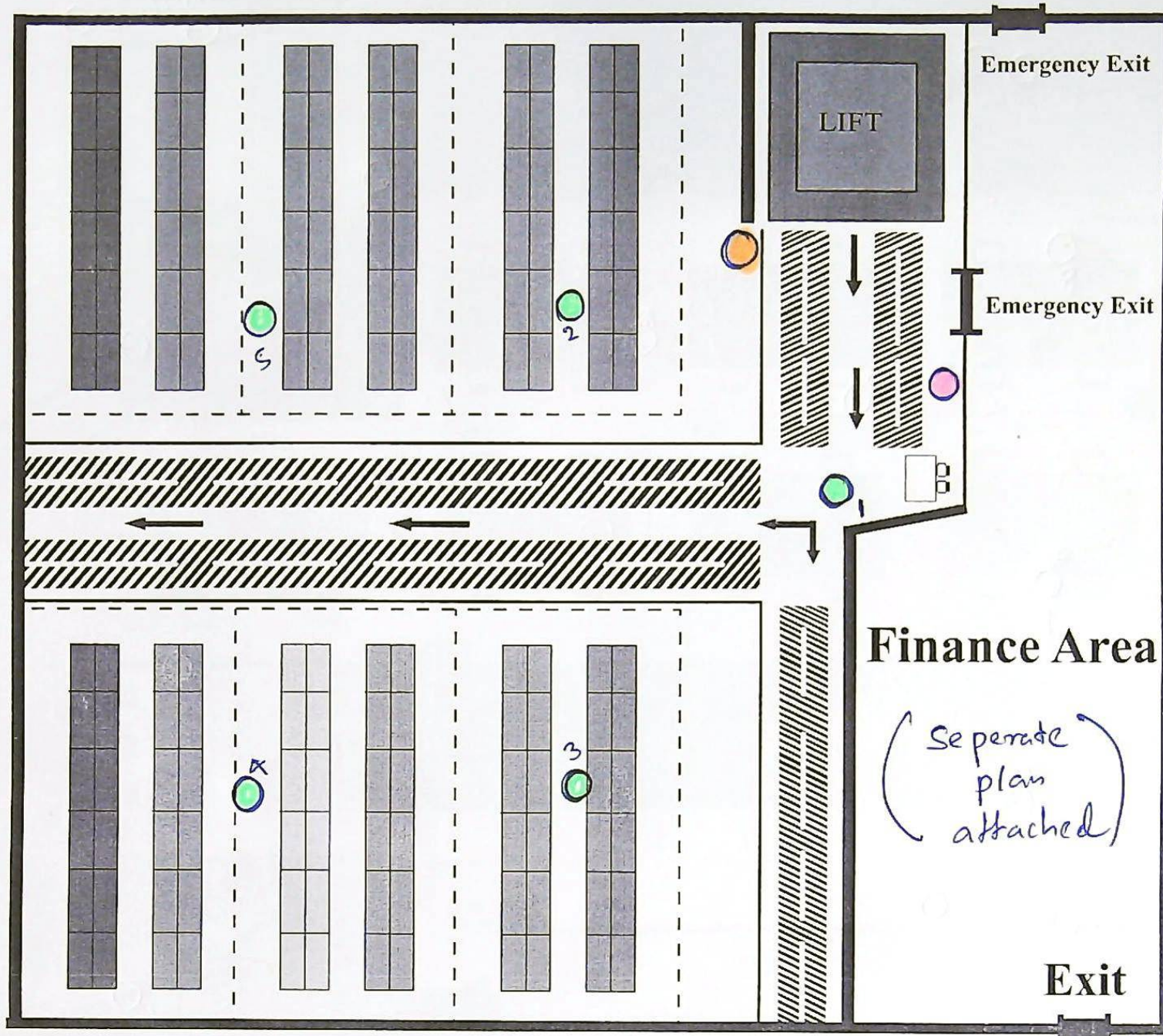
Dispatch Bay

Receiving Bay

- - smoke detectors 12 NOS
- - manual call points 4 NOS
- - sounders 3 nos with light

# Building B Stores 1st Floor Plan

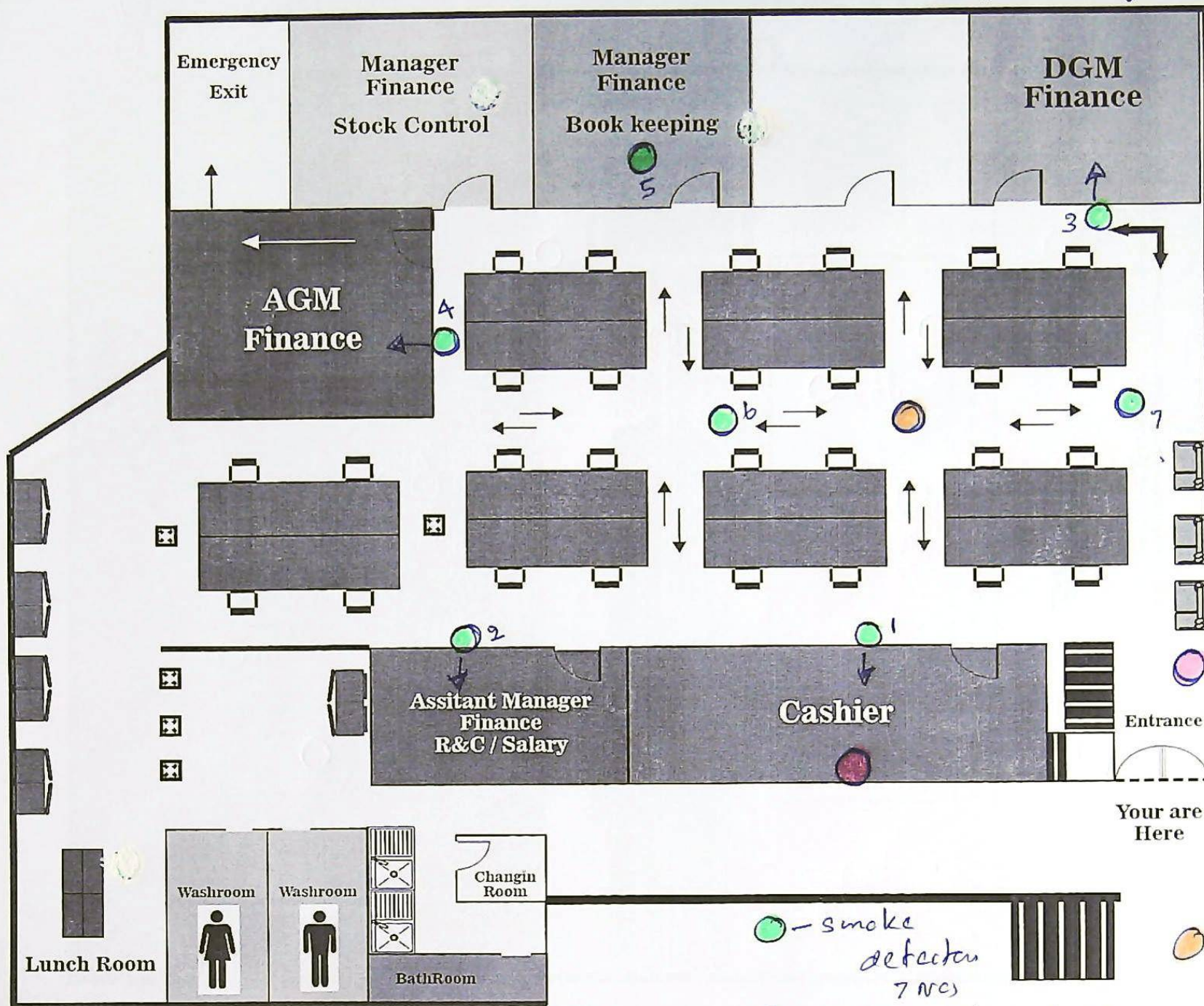
plan ⑤



- Smoke detectors SNO
- manual call points INS
- - sounders with hazard (1)res

# Building B Finance Division Plan (1st floor)

plan (6)

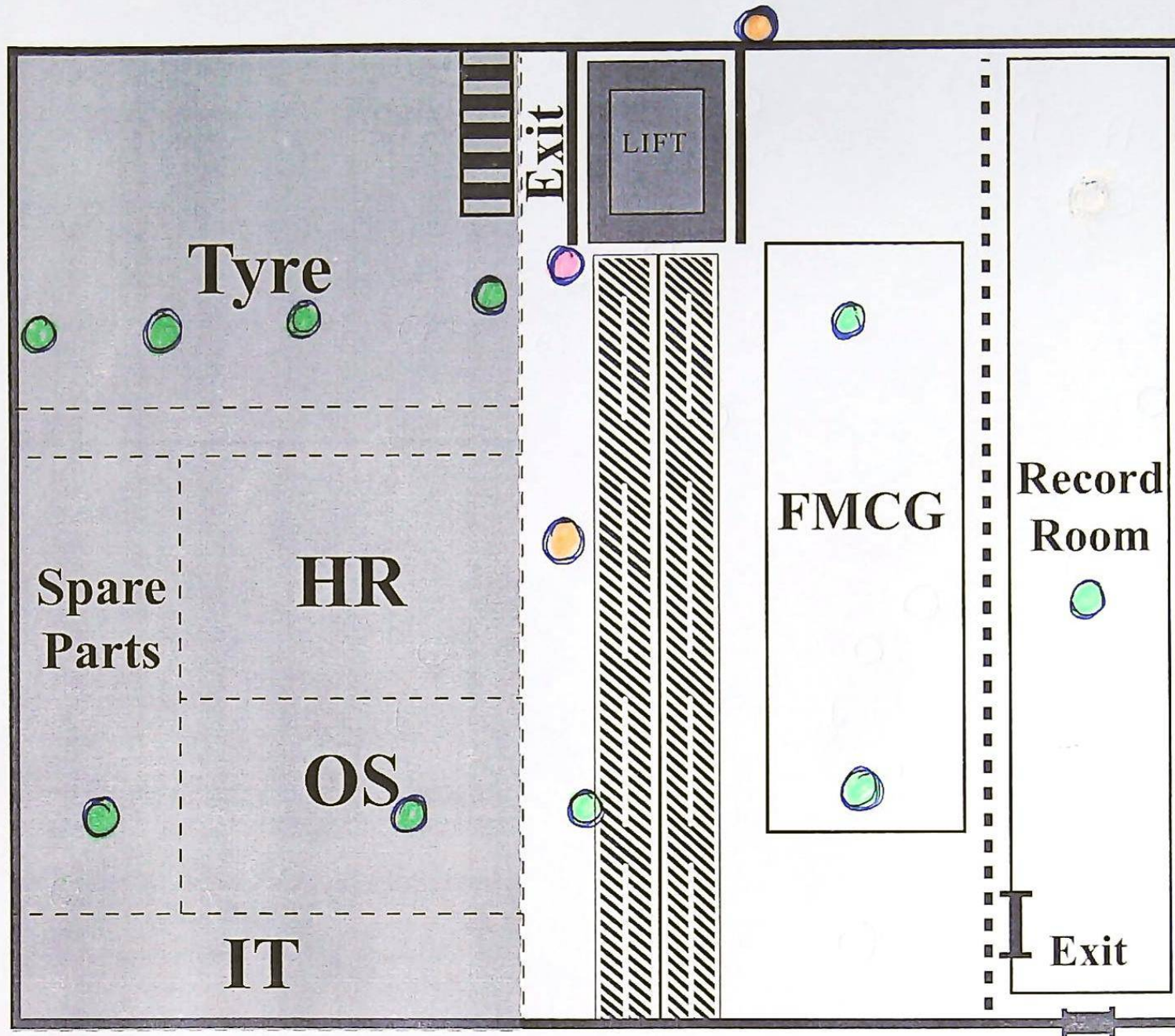


● - smoke detector 7 nos

● sounders with light

● - manual call points 2 nos

# Building B Stores 2nd Floor Plan



- - smoke detectors (10 nos.)
- - manual call points
- - sounders with light